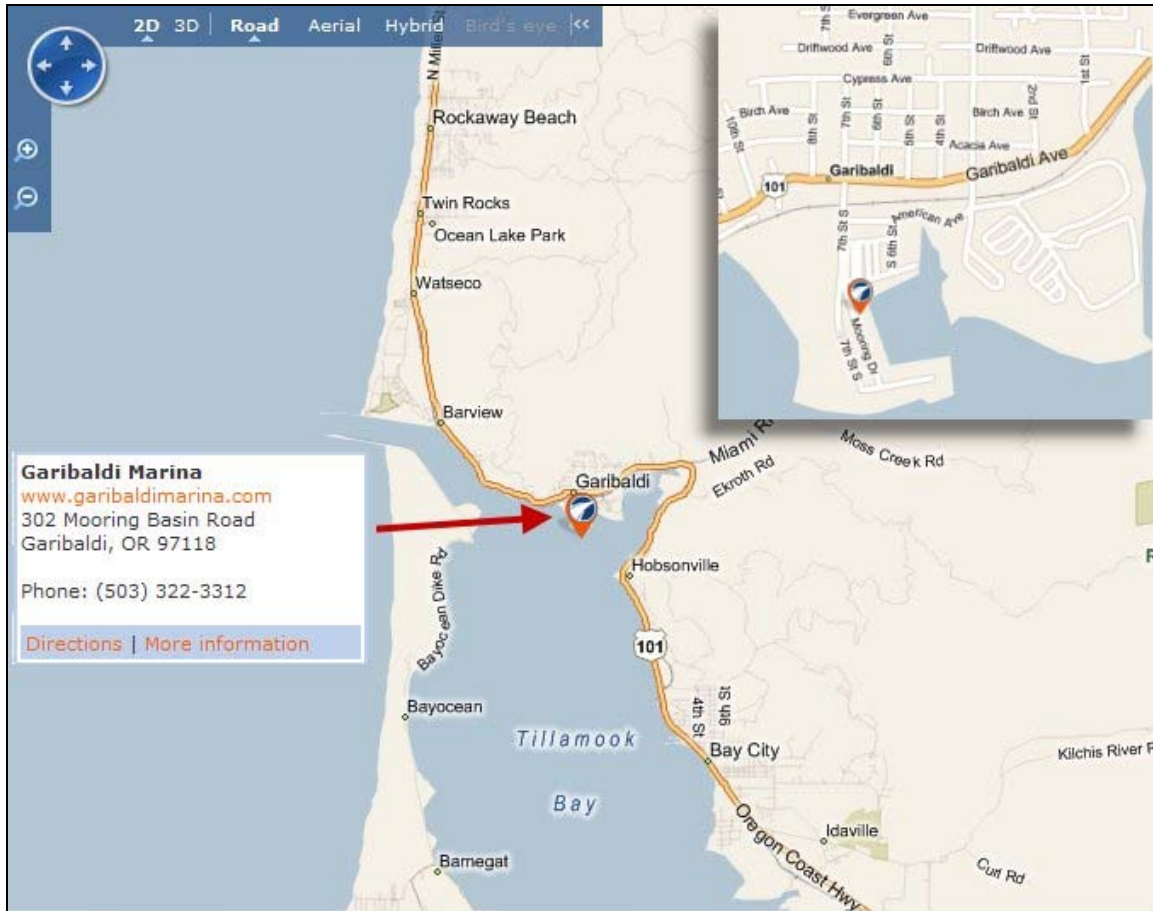


Driving directions to Garibaldi Marina www.portlandsalmonfishing.com

From Portland take **Hwy 26 Sunset Hwy** west to the **Banks/Tillamook** turn off. This will put you on **Hwy 6** toward Banks. Follow Hwy 6 into the town of **Tillamook**; at signal light turn right onto **Hwy 101 north** toward Garibaldi. In Garibaldi turn left onto **7th street** and follow to boat basin. Approximate driving time: 1 hour 45 minutes.



Book your trip now!
Call Oregon Fishing Guide Ed Smith
503-650-2328, Cell 503-781-4373
E-mail: ed@portlandsalmonfishing.com
www.portlandsalmonfishing.com



Book your trip now!

**Call Oregon Fishing Guide Ed Smith
503-650-2328, Cell 503-781-4373**

**E-mail: ed@portlandsalmonfishing.com
www.portlandsalmonfishing.com**