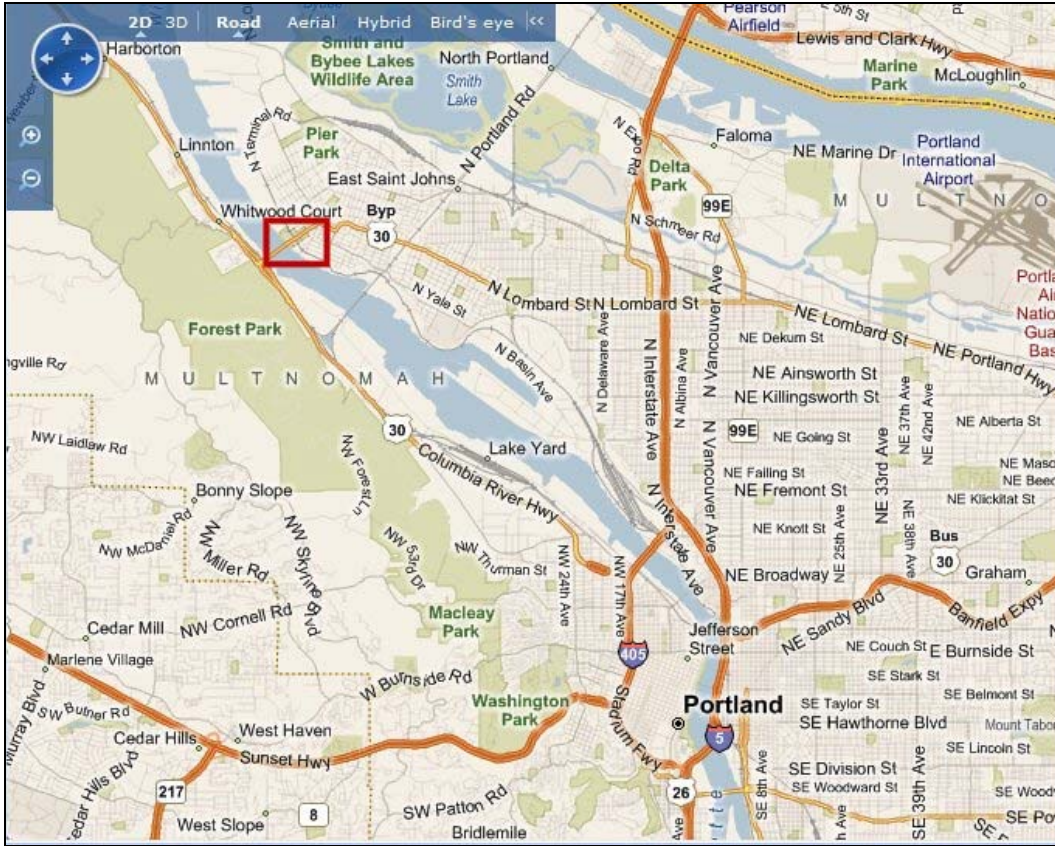


Cathedral Park

N. Edison St. & Pittsburg Ave Parks & Recreation 503-823-1605

The Park and boat launch, where you will meet your guide, is located directly under the east end of the St. Johns Bridge. Turn **west off Lombard** on to **N. Baltimore** Street and drive down the hill. N. Baltimore will lead you directly to the Park. Watch for boat launch and/or Park signs.



Call Oregon Fishing Guide Ed Smith
503-650-2328, Cell 503-781-4373
E-mail: ed@portlandsalmonfishing.com

